





MSS-SX

The new MSS-SX parting and grooving blades are reinforced and offer stable self-clamping for SX cutting inserts. The parting and grooving blades allow for radial parting and grooving with depths up to 33 mm and widths from 3 to 4 mm. Maximum stability through the reinforced tool holder, low

tendency to vibration and easy insert change.

Higher stability of machining process

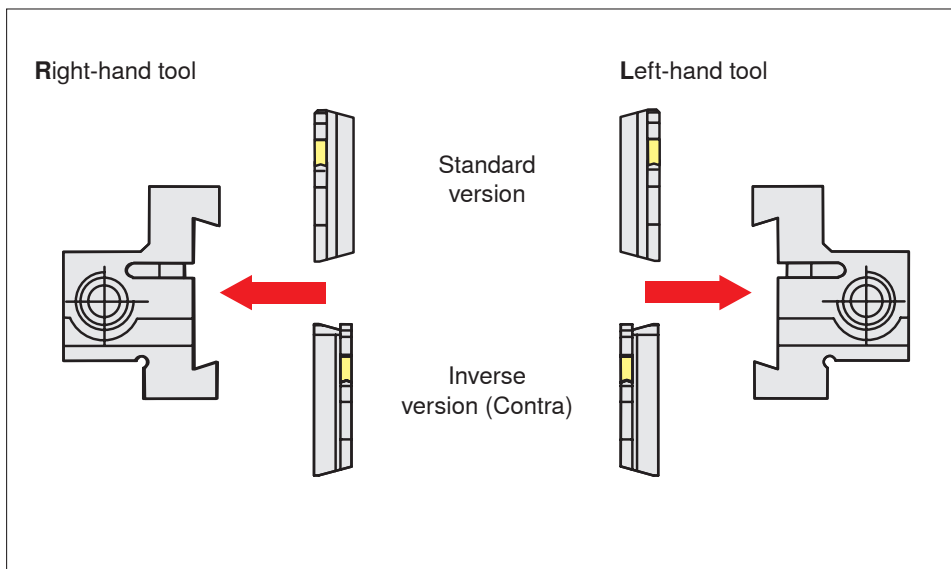
The reinforced tool holders provide maximum stability and low tendency to vibration.

Easier to use

The inserts can be easily changed using an SX mounting key.



The correct tool selection

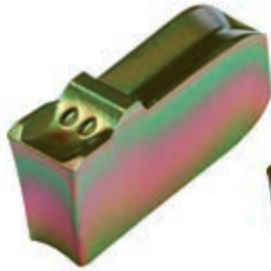




The new parting and grooving range

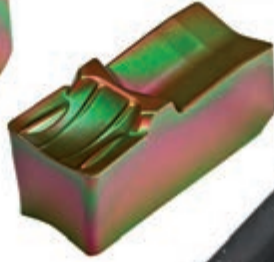
COLORSTAR™ CTCP325

COLORSTAR™ CTCP325 is suitable for stable conditions on steel and cast iron: the grade is ideal for high cutting speeds.



SILVERSTAR™ CTP1340

The high-performance grade for universal application on steel materials, austenitic steel, cast iron and heat-resistant materials: thanks to good edge stability and toughness SILVERSTAR™ CTP1340 CTP1340 is also ideal for unstable conditions.



COLORSTAR™ CTCP335

This grade is the secure all-rounder for medium to high cutting speeds and perfectly suitable for the machining of steel and cast iron materials.

SILVERSTAR™ CTPP345

This wear-resistant grade for the machining of steel materials and austenitic steels is also suitable for unstable conditions or unfavourable cutting conditions, for medium to low cutting speeds.

Introduction

Tools and inserts for parting and grooving

COLORSTAR™ and SILVERSTAR™ - the new parting and grooving range

