

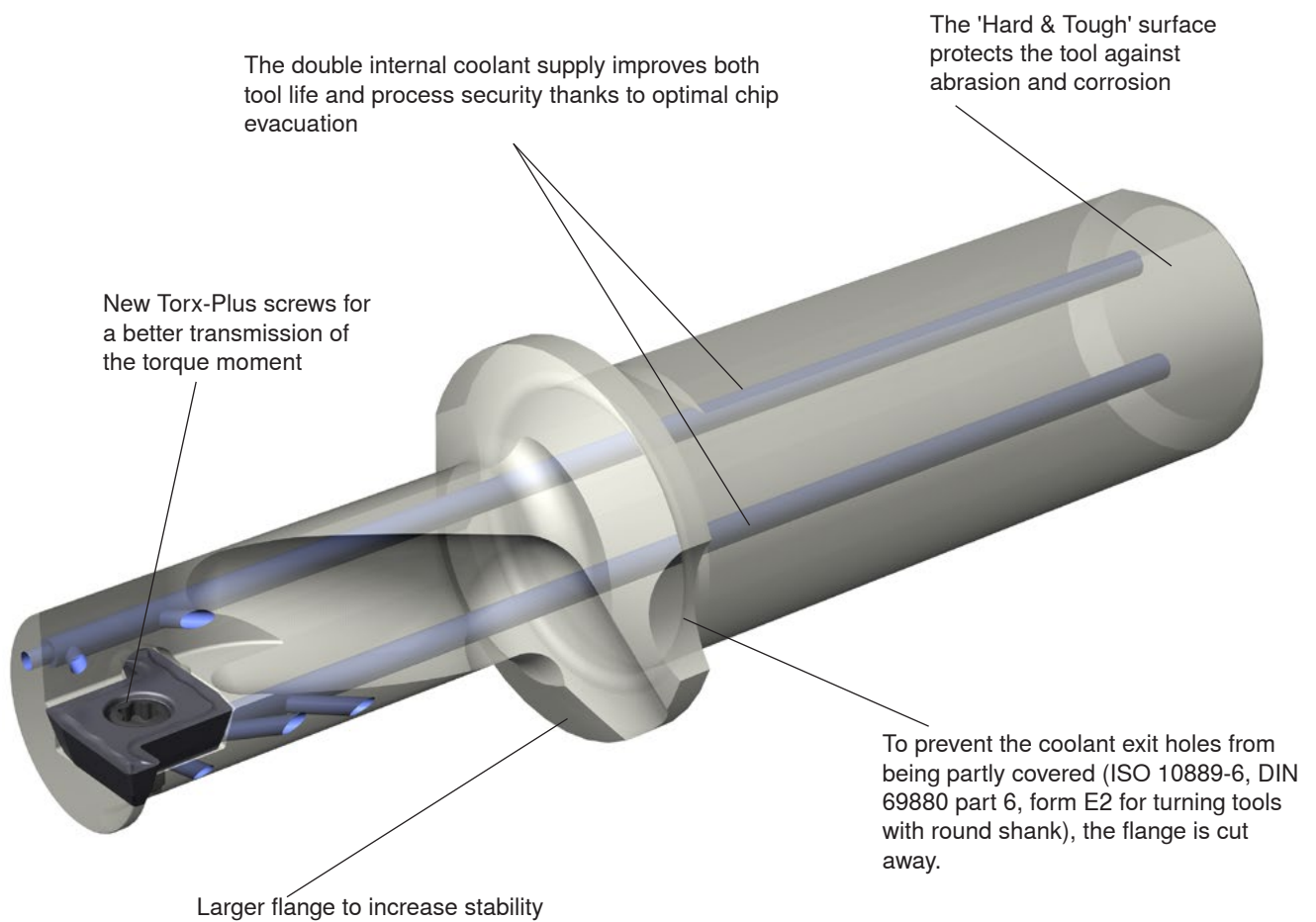
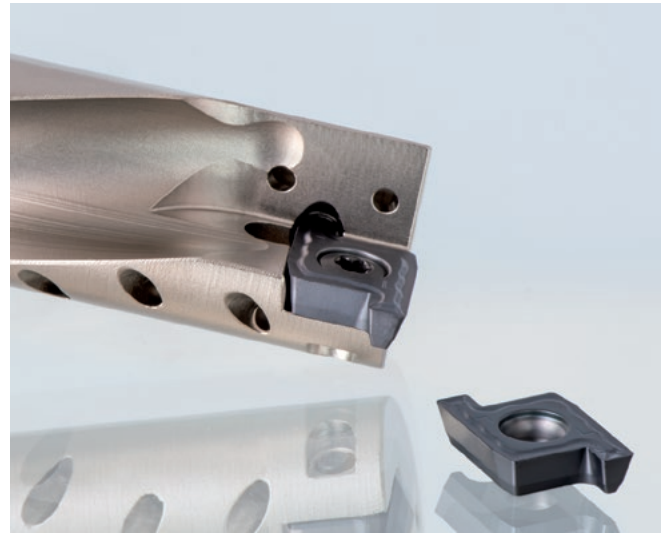


Multi-function tools

Revised product range

ProfileMaster with a new guise

We have been consistently developing our ProfileMaster further - benefit from more than 20 years' experience with multi-function tools: the new 'Hard & Tough' coating protects the tool against abrasion and corrosion. Also new: the optimised double coolant supply ensures optimal chip evacuation and thus longer tool life. For improved stability, ProfileMaster also features a larger flange.

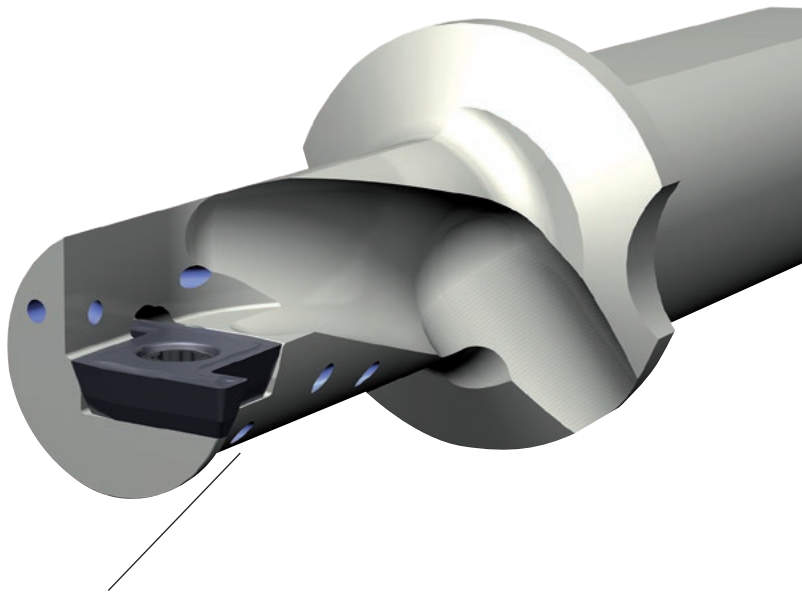


Your advantages

- ▲ Drilling, boring, face and longitudinal turning, counter-boring, off-centre drilling, axial or radial grooving
- ▲ Flat bottom holes
- ▲ Through coolant
- ▲ Easy to use

Your benefits

- ▲ One tool for several machining operations
- ▲ Fewer tool positions necessary
- ▲ Fewer tool changes
- ▲ Reduced machining time
- ▲ No additional tool required
- ▲ Good chip evacuation
- ▲ High process security
- ▲ Reduced pre-setting time
- ▲ Short set-up time
- ▲ Reduced programming effort

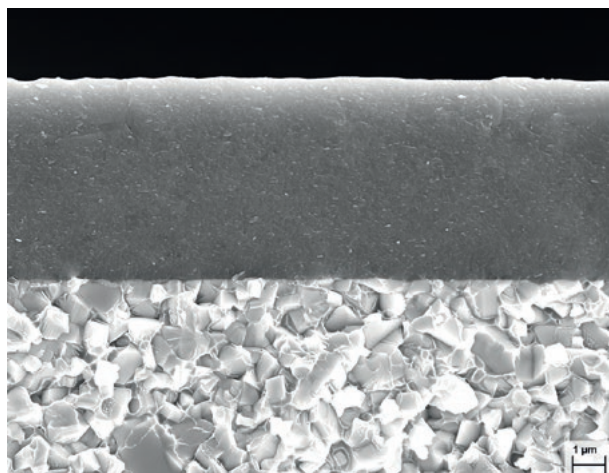


Due to the insert size the diameters 10 mm and 12 mm can be applied only as 90° version. For this reason the new tools are provided with a support in the area of the parting and grooving blade in the insert seat to increase stability.

▲ SILVERSTAR™

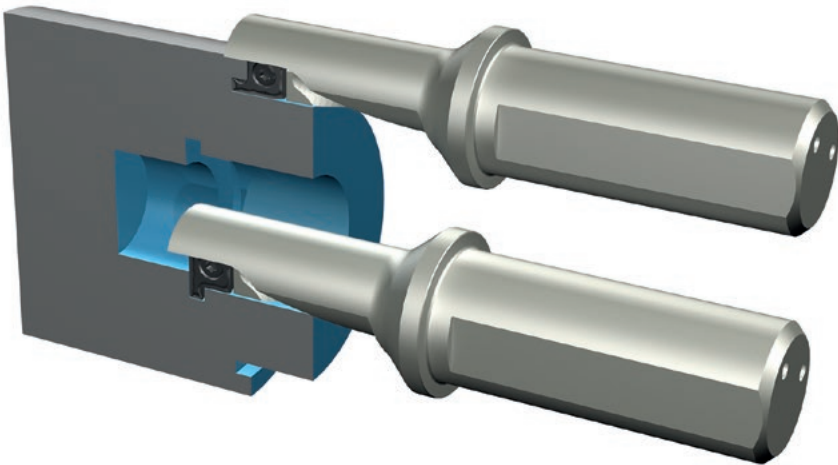
SILVERSTAR™ CTPP430

The high-performance grade for steel materials, austenitic steel, cast iron materials and heat-resistant materials can be applied universally. Thanks to its high transverse rupture strength and cutting edge stability SILVERSTAR™ CTPP430 is ideal for applications with ProfileMaster.



Drilling, turning, parting and grooving with only one tool

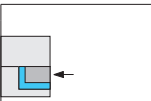
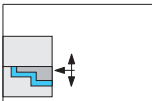
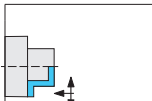
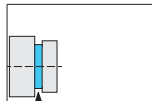
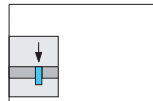
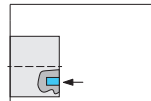
- The ProfileMaster is excellently suited for profiles that are so complex that they can normally only be produced with the use of several tools
- In addition, it helps free up valuable positions on the machine and minimise the need to change tools
- Thanks to the Masterfinish effect, the ProfileMaster produces an excellent surface finish in the shortest possible time



Material groups

P		●
M		●
K		●
N		○
S		●
H		

Possible applications

					
Drilling into solid material	Boring applications	External turning applications	External radial grooving	Internal radial grooving	Axial grooving

Detailed information

Diameter / length ratio	Ø range	Inserts
1,5 x D 2,25 x D	Ø 10 - 32 mm	PM 10.. .. PM 32..